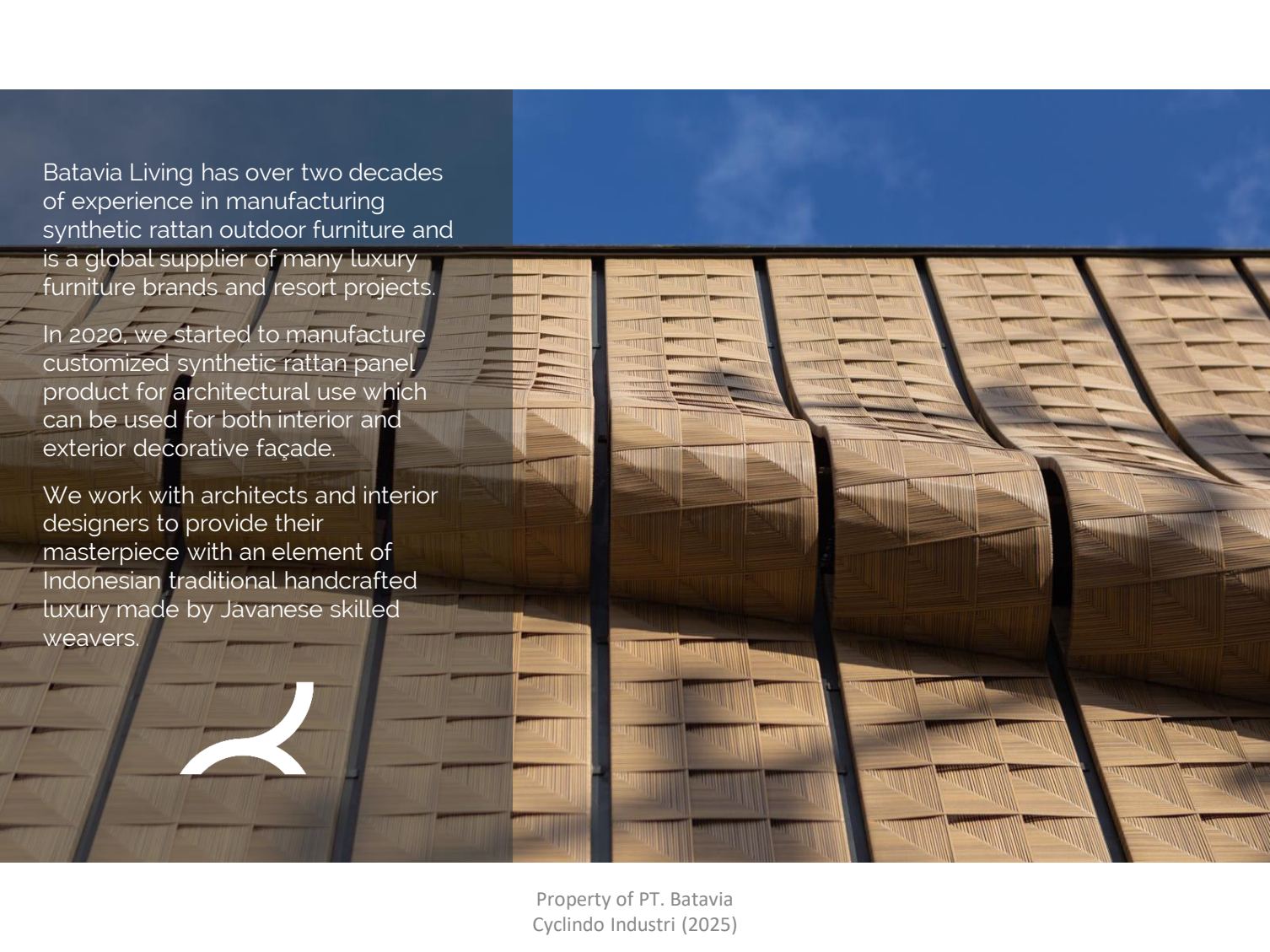




Bringing handcrafted luxury to  
modern architectural designs

 **batavia**  
LIVING FURNITURE

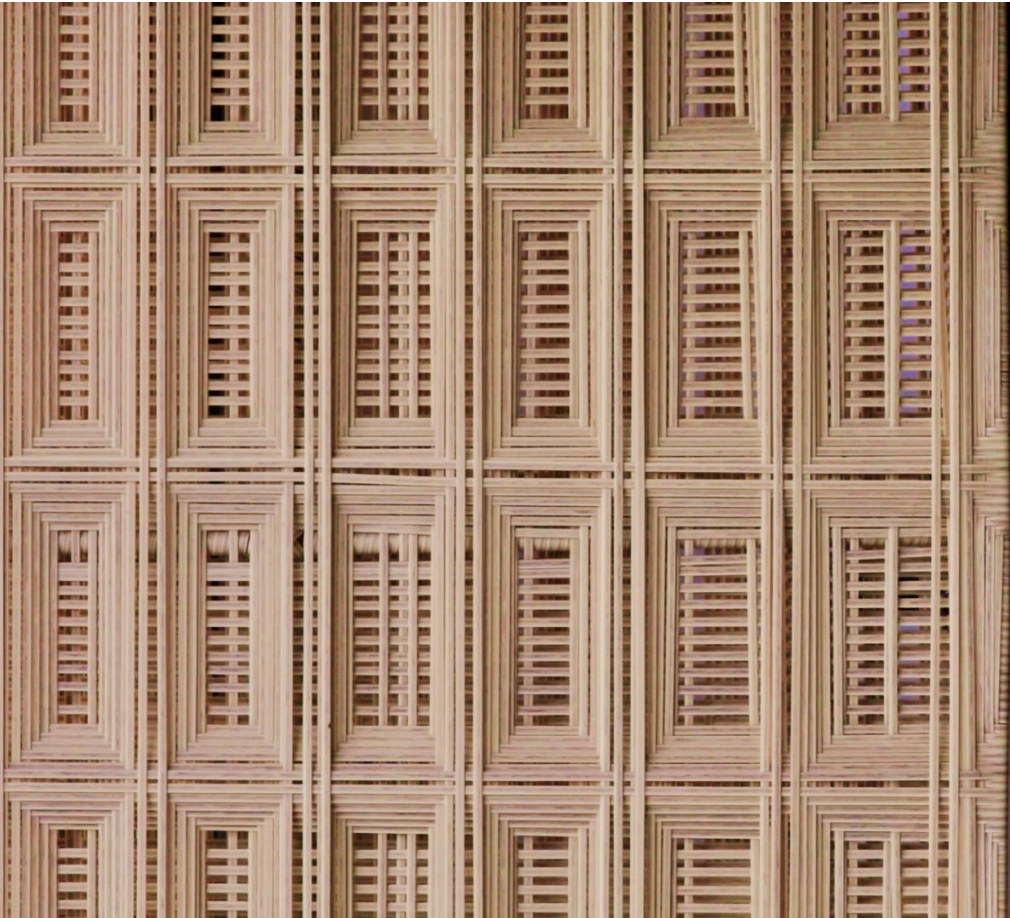


Batavia Living has over two decades of experience in manufacturing synthetic rattan outdoor furniture and is a global supplier of many luxury furniture brands and resort projects.

In 2020, we started to manufacture customized synthetic rattan panel product for architectural use which can be used for both interior and exterior decorative façade.

We work with architects and interior designers to provide their masterpiece with an element of Indonesian traditional handcrafted luxury made by Javanese skilled weavers.





We manufacture synthetic rattan panel with aluminum frame. Clients are required to provide the details of the dimensions and the general outlook of the project. 2D architectural drawing of the panel section can help us to quickly calculate the cost.

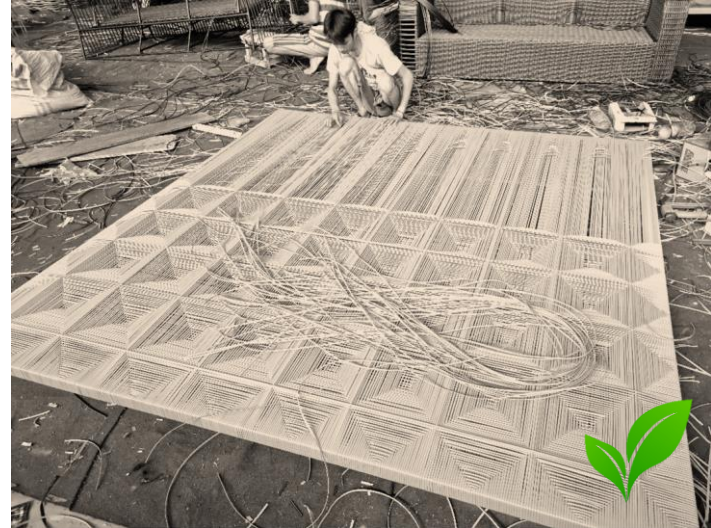
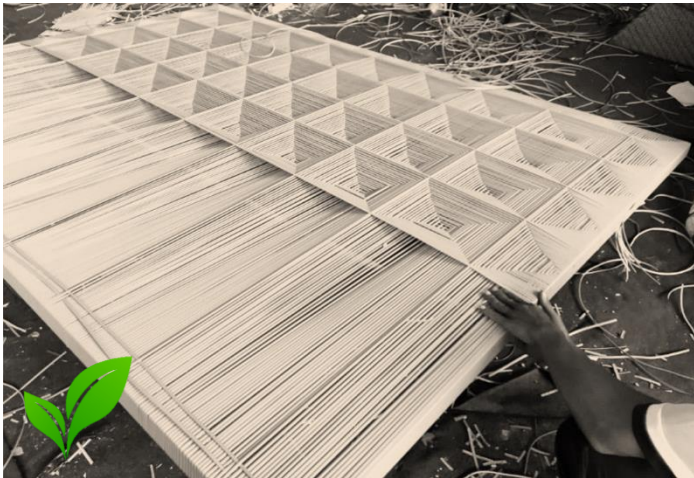
We also provide survey visit service, measurement service, and also the final installation if required. These added services are optional. However, most of the time they have to be included for accuracy purposes.





We create traditionally handcrafted weaving with extraordinary customizable patterns with skilled artisan weavers that have been trained for many years under our nurturing.

We provide hundreds of jobs for our valued weavers who are very dedicated for their work.

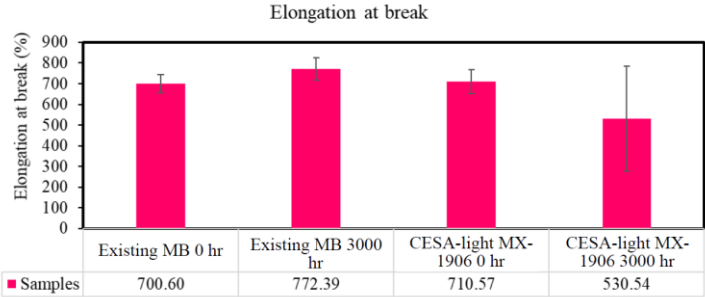
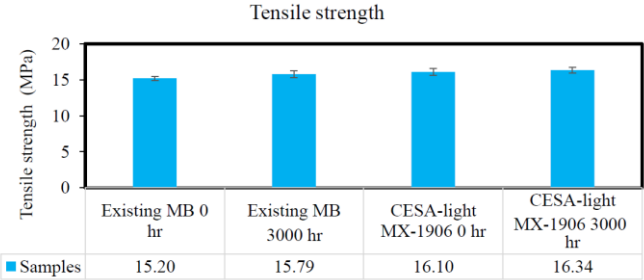


We use all-weather HDPE synthetic rattan which is eco-friendly and 100% recyclable. Our weaving process is sustainable as the leftover wastes are recycled for recycling.

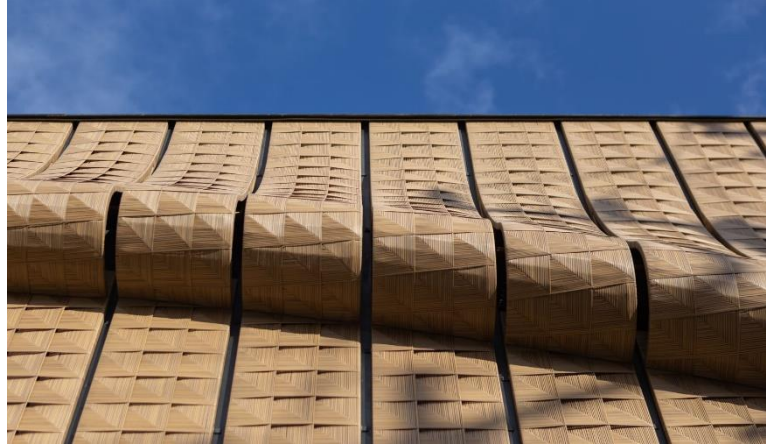
*Lab Requested No.: 102470-20*

2. Flat artificial rattan

**Figure 2.** Tensile properties of flat artificial rattan.



- Lab tested high quality materials
- Fully waterproof and bio-resistant
- Sunlight-resistant gives color fastness for 8 years before slight change (anti-UV tested in lab using artificial weathering)
- Lightweight and fully powdercoated rustproof aluminum frame
- Competitive pricing straight from integrated factory with internal pipe extruder machine for better quality control



Property of PT. Batavia  
Cyclindo Industri (2025)



Property of PT. Batavia  
Cyclindo Industri (2025)

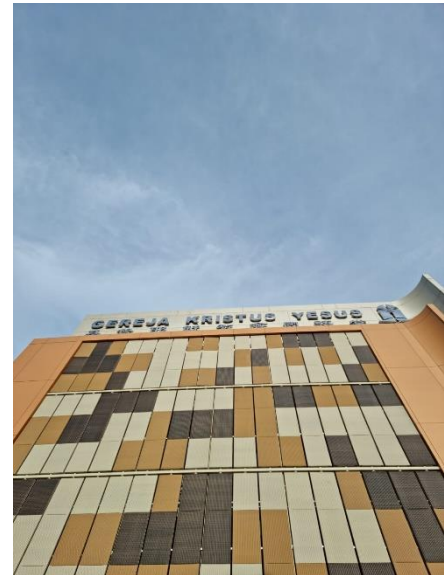
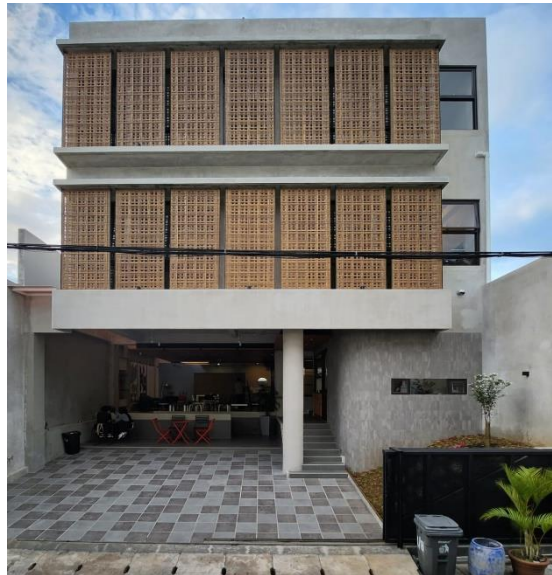
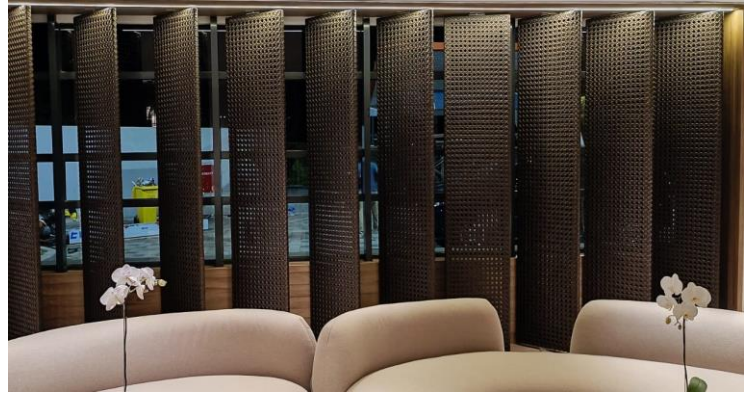


Property of PT. Batavia  
Cyclindo Industri (2025)

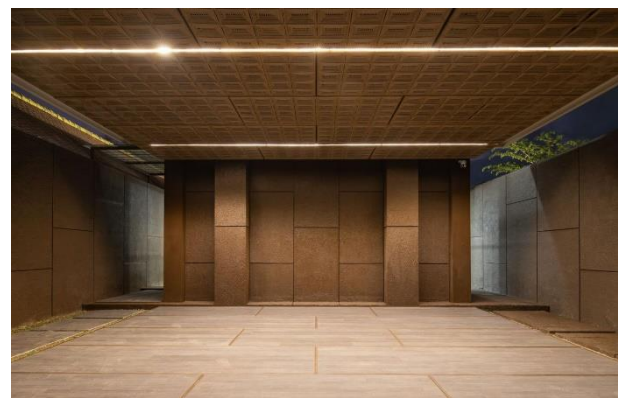
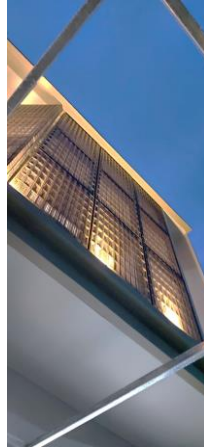




Property of PT. Batavia  
Cyclindo Industri (2025)



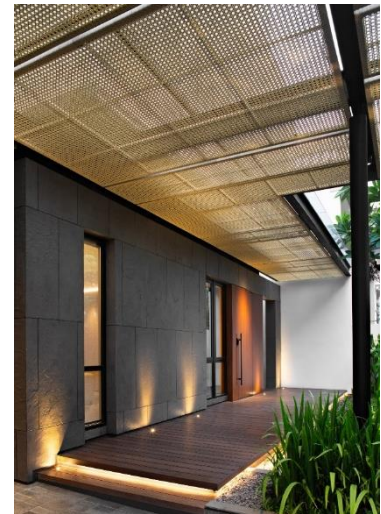
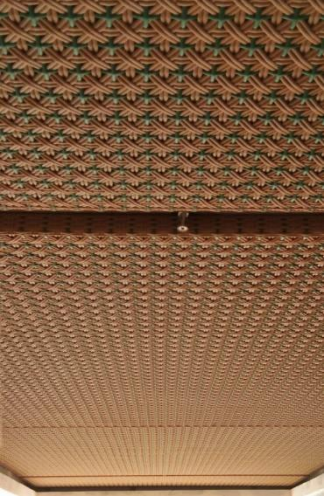
Property of PT. Batavia  
Cyclindo Industri (2025)



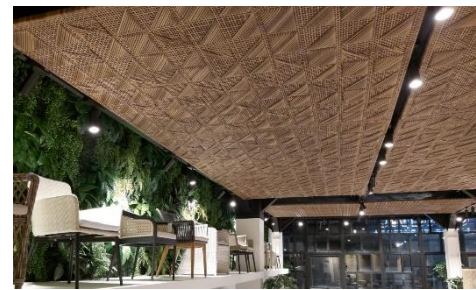
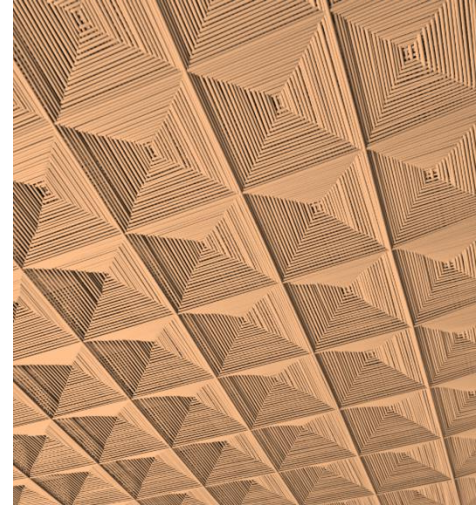
Property of PT. Batavia  
Cyclindo Industri (2025)

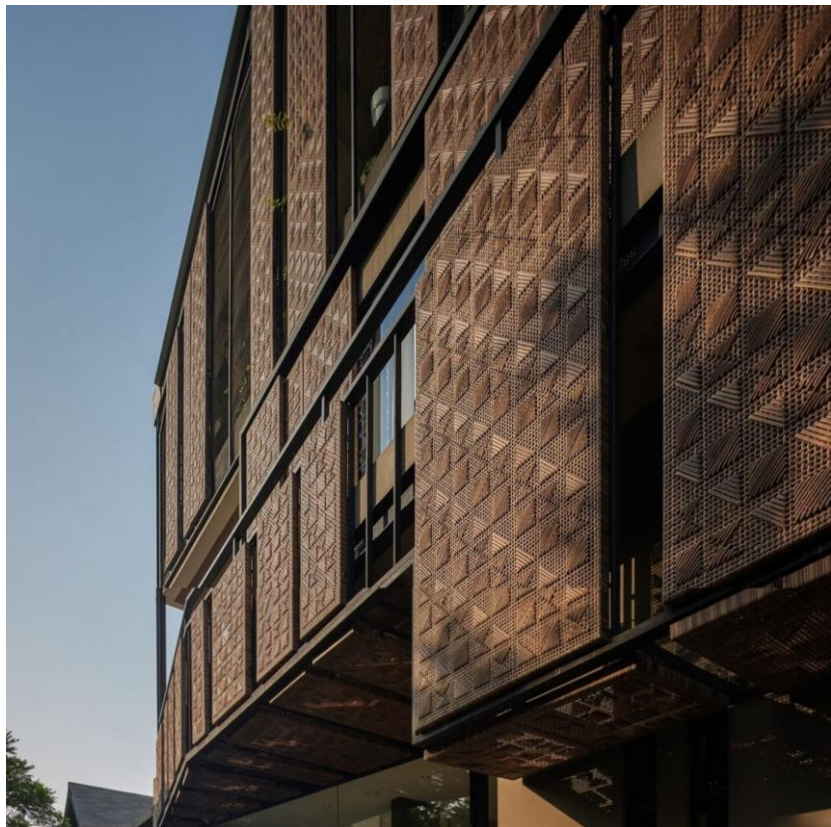


Property of PT. Batavia  
Cyclindo Industri (2025)



Property of PT. Batavia  
Cyclindo Industri (2025)





Property of PT. Batavia  
Cyclindo Industri (2025)

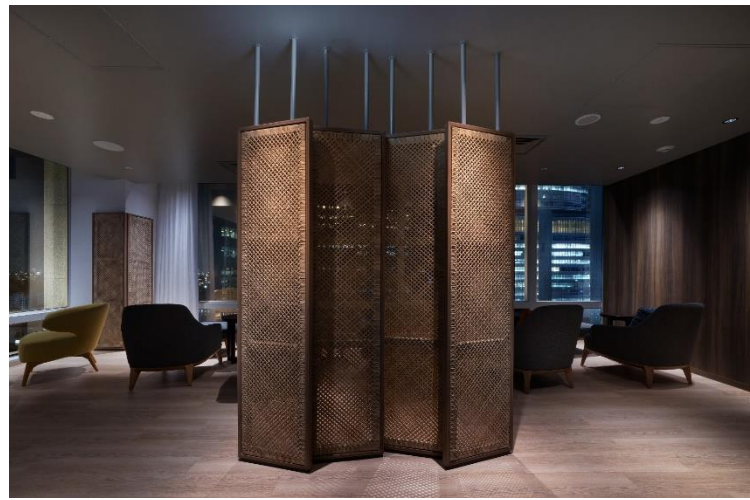


Property of PT. Batavia  
Cyclindo Industri (2025)





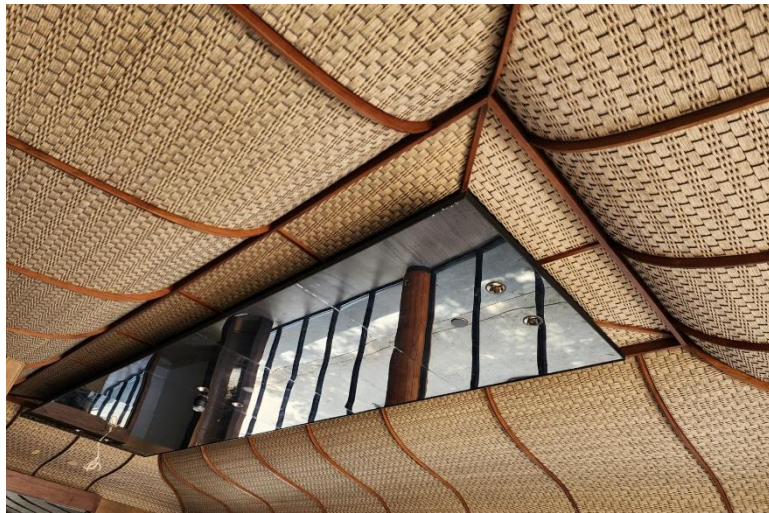
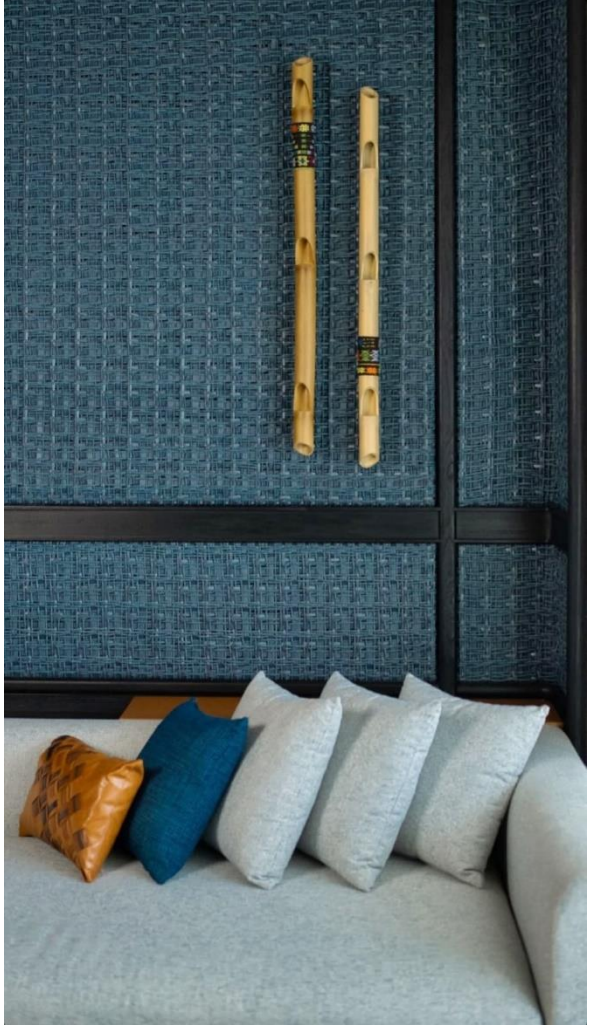
Property of PT. Batavia  
Cyclindo Industri (2025)



Property of PT. Batavia  
Cyclindo Industri (2025)



Property of PT. Batavia  
Cyclindo Industri (2025)



Property of PT. Batavia  
Cyclindo Industri (2025)



Property of PT. Batavia  
Cyclindo Industri (2025)

**Pattern 1 - Square elevation (basic)**



**Pattern 4 - Random square 3D (medium)**



**Pattern 2 - Rectangle elevation (basic)**



**Pattern 5 - Flower cane (medium)**



**Pattern 3 - Corner staircase (basic)**



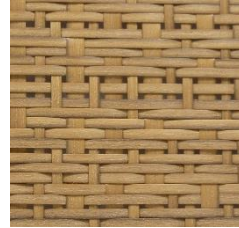
**Pattern 6 - Zig zag / Herringbone (medium)**



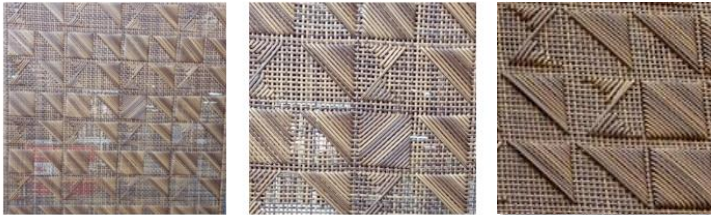
**Pattern 7 – Diagonal cross pattern (medium)**



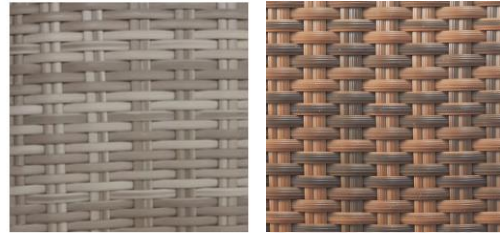
**Pattern 10 – Dense irregular (medium)**



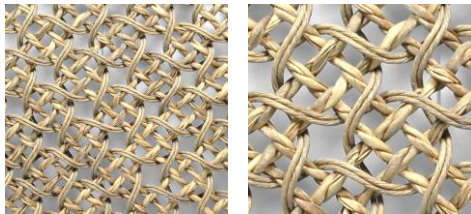
**Pattern 8 – Random triangle (medium)**



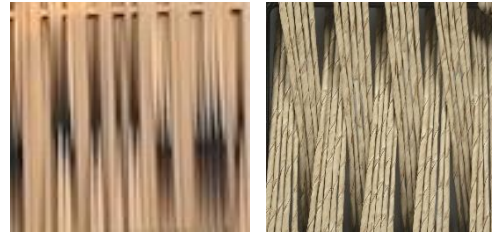
**Pattern 11 – Normal linear dense (basic)**



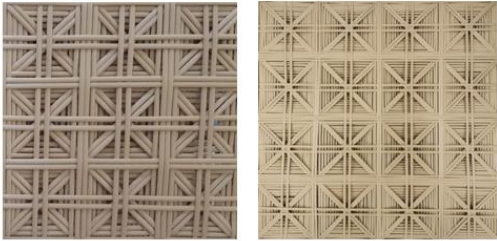
**Pattern 9 – Talisman (medium)**



**Pattern 12 – Vertical open weaving (basic)**



**Pattern 13 – X square (medium)**



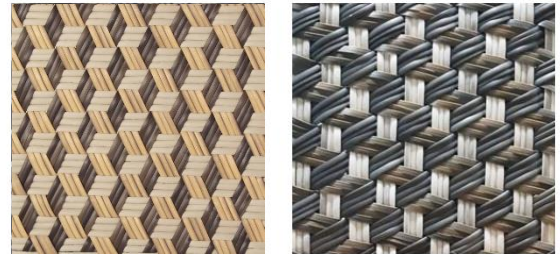
**Pattern 16 – Batik (hard)**



**Pattern 14 – Skeletal (medium)**



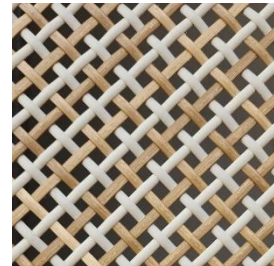
**Pattern 17 – Triple cross (medium)**



**Pattern 15 - Wayang (medium)**



**Pattern 18 – Diagonal two tone (basic)**





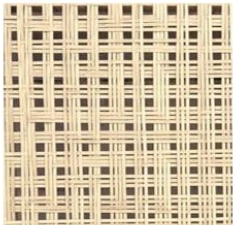
**Pattern 19 – Feather (medium)**



**Pattern 22 – Lumba pattern (medium)**



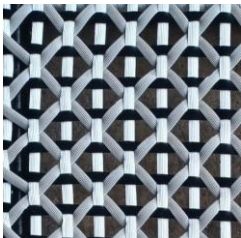
**Pattern 20 – Random L pattern (basic)**



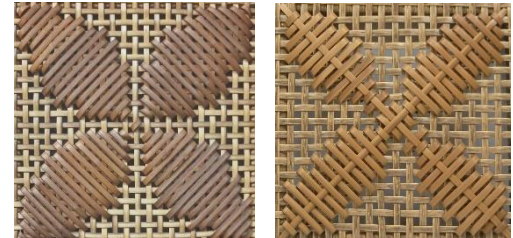
**Pattern 23 – Wings (medium)**



**Pattern 21 – Net trio pattern (medium)**



**Pattern 24 – Kawung (medium)**



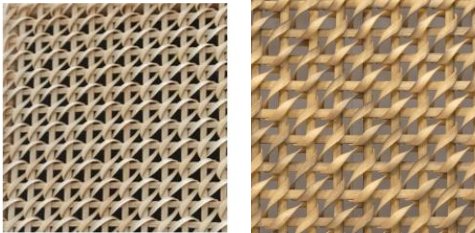
**Pattern 25 – Random square dense  
(medium)**



**Pattern 28 – Ulos Batak pattern (high-level)**



**Pattern 26 – Water pattern (medium)**



**Pattern 29 – Floating diamonds pattern (hard)**



**Pattern 27 – Diamond pattern (hard)**



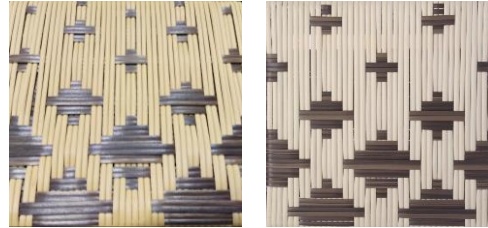
**Pattern 30 – Shuriken pattern (high-level)**



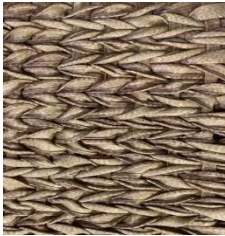
**Pattern 31 – Fish (medium)**



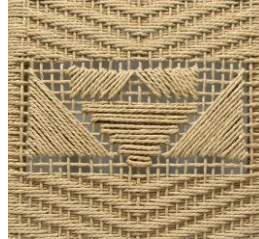
**Pattern 34 – Random Star (medium)**



**Pattern 32 – Normal dense kusut (basic)**



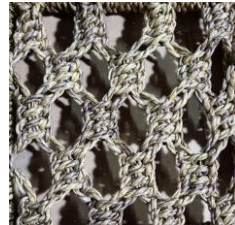
**Pattern 35 – Fendi monster (hard)**



**Pattern 33 – Tango (medium)**



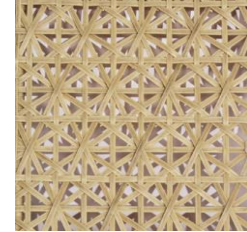
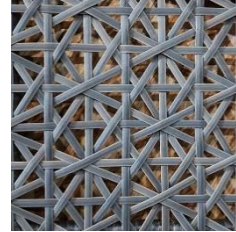
**Pattern 36 – DNA (medium)**



**Pattern 37 – Spider Web (medium)**



**Pattern 40 – Sunflower (hard)**



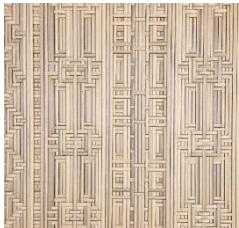
**Pattern 38 – Dual-size Plus Pattern (medium)**



**Pattern 41 – Dense Random Corners (medium)**



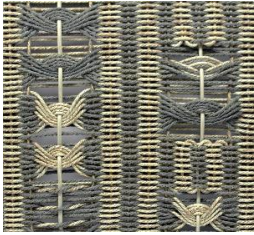
**Pattern 39 – Calligraphy (medium)**



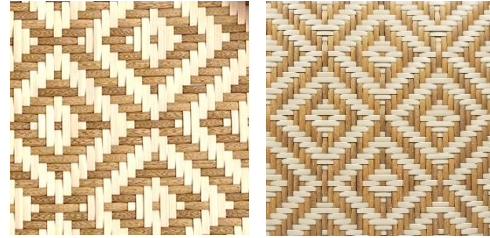
**Pattern 42 – Grid (medium)**



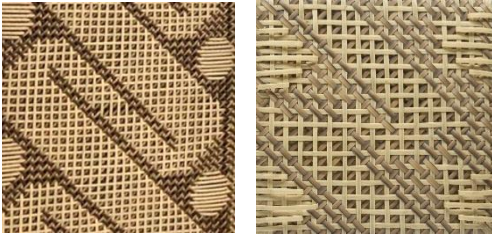
**Pattern 43 – Tribal weave LCLB (hard)**



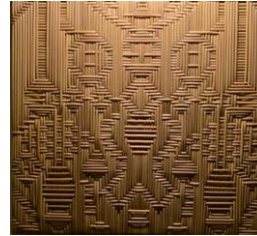
**Pattern 46 – Hypnotic Diamond (high-level)**



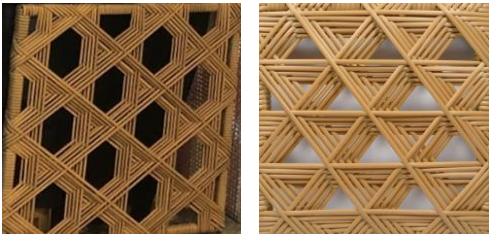
**Pattern 44 – Snake Balls (high-level)**



**Pattern 47 – Mirror Art (high-level)**



**Pattern 45 – 3D Hexagon (basic)**



**Pattern 48 – Octopus (high-level)**





### Showroom

Kemang 10 Building, Jl.  
Kemang Raya no. 10 A,  
Bangka, Jakarta, Indonesia

### Contact us through:

[www.batavia-living.com](http://www.batavia-living.com)

IG: @batavialivingfurniture

Property of PT. Batavia  
Cyclindo Industri (2025)